



MARDEV  
DEVELOPMENTS

EL MARWA URBAN DEVELOPMENT

Since 1989



MENORCA

R E S I D E N C E



# العاصمة الإدارية الجديدة

المرحلة الأولى 40,000 فدان



- Administration & Commercial MU
- Residential Oasis 1 R01
- Residential Oasis 2 R02
- Residential Oasis 3 R03
- Residential Oasis 4 R04
- Residential Oasis 5 R05
- Residential Oasis 6 R06
- Residential Oasis 7 R07
- Residential Oasis 8 R08
- Government 01 GOV01
- Government 02 GOV02
- Presidential Park PP1
- Academic City X01
- Smart City X02
- Central Hub X03
- Medical City A X04
- Medical City B X05
- Hotel X06
- Conference Center X07
- Presidential Palace X08
- EXPO X09
- Information Center X10
- Hotel X11
- Religious X12
- Opera House X13
- History & Gateway Park CP1
- Health & Sustainability Park CP2
- Civic Park CP3
- International Park CP4
- Science, Innovation & Technology Park CP5
- Investment Zone 1 P1
- Investment Zone 2 P2
- Investment Zone 3 P3
- Constitutional Court CO
- Diplomatic District EMB

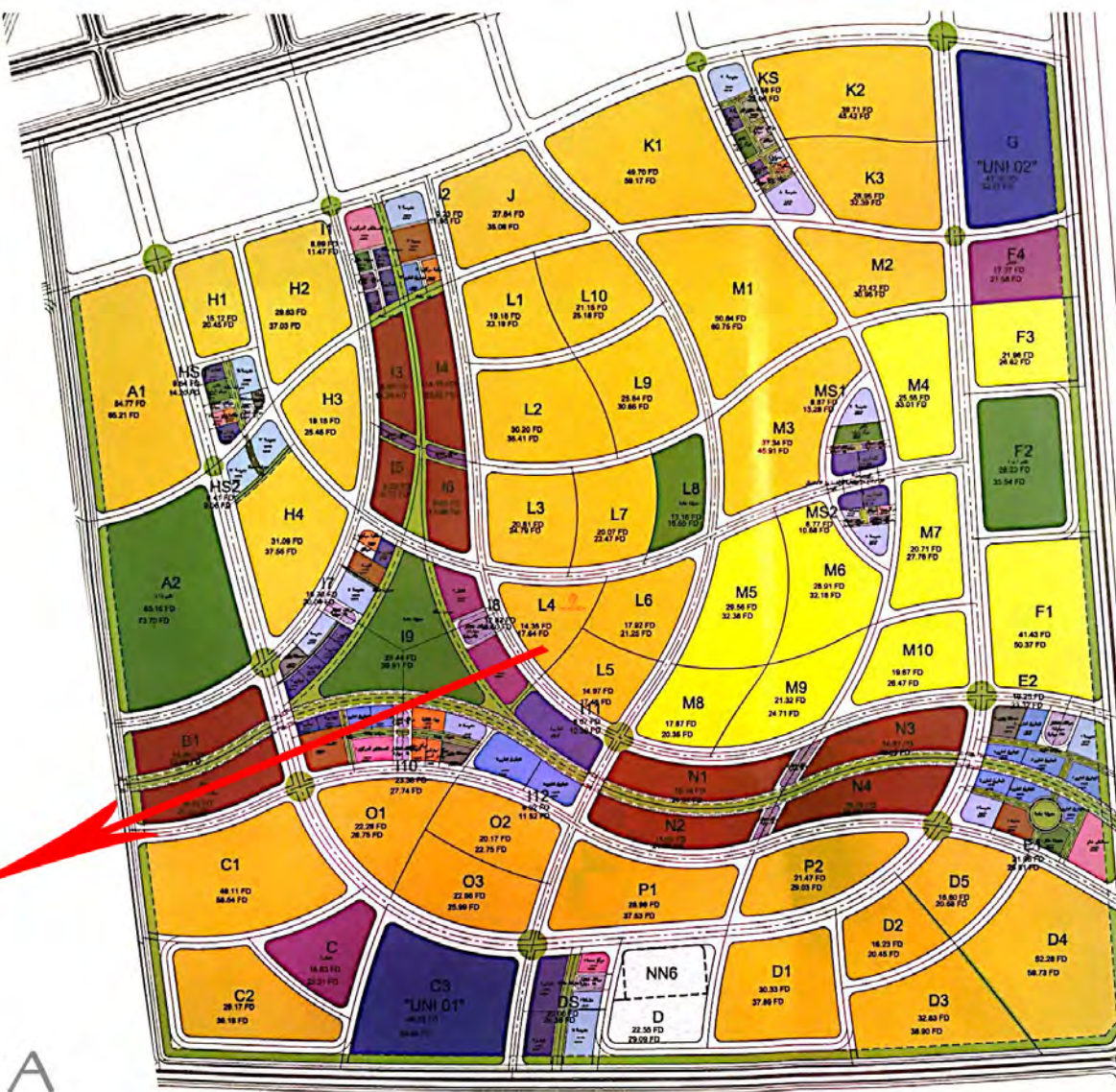


Phase 1 Master Plan  
168,000,000 m<sup>2</sup>





MENORCA  
RESIDENCE



استعمالات الاراضى	
سكنى منخفض الكثافة	Yellow
سكنى متوسط - مرتفع الكثافة	Orange
سكنى مميز (٢٠٪ تجارى-ادارى - خدمى)	Red
جامعات	Dark Blue
خدمات مركزية وخدمات الحى السكنى	Light Blue
مدارس وحضانات	Light Blue
مناطق خضراء و نوادى	Green
خدمات دينية	Brown
خدمات تجارية	Purple
خدمات تجارية / ادارية	Blue
خدمات صحية	Pink
خدمات ثقافية واجتماعية	Orange
محطات بنزين وخدمات امنية	Grey
مواقف انتظار سيارات	Light Grey
مرافق	White

R8 DISTRICT







MENORCA RESIDENCE

MENORCA  
RESIDENCE



































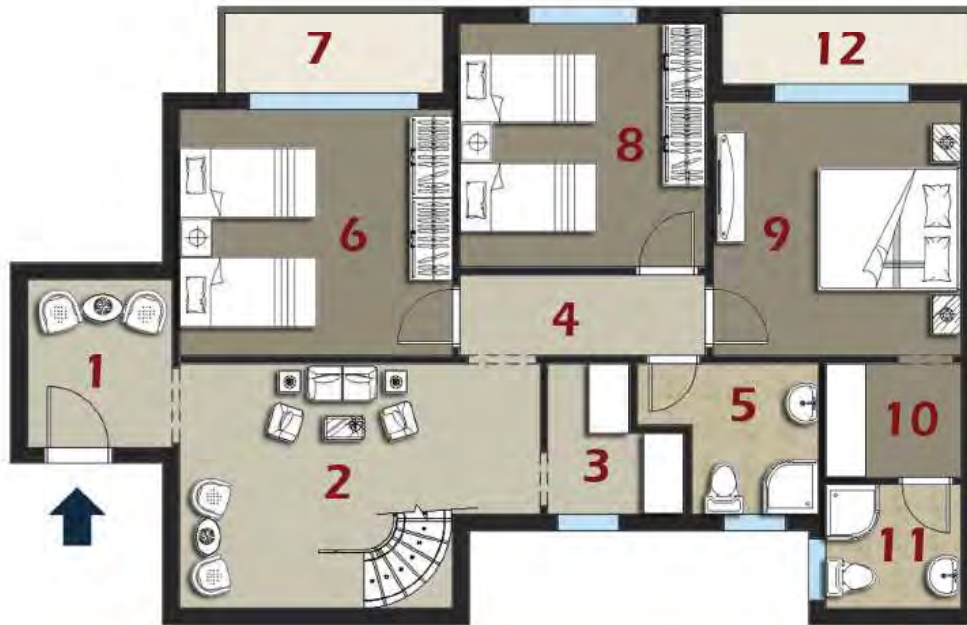


# BUILDING ( A )

## GROUND FLOOR PLANS







FIRST FLOOR

GROUND FLOOR

## DUPLEX

### TOTAL AREA 254 m<sup>2</sup>

#### GROUND FLOOR :

1 - Reception	7.35 x 4.00	6- Bedroom	3.65 x 3.75
2 - Reception	3.60 x 4.90	7 - Dressing	2.00 x 1.70
3 - Terrace	3.35 x 1.30	8 - Bathroom	2.00 x 1.80
4 - Kitchen	2.25 x 3.30	9 - Terrace	3.80 x 1.20
5 - Bathroom	2.25 x 2.65		

#### FIRST FLOOR :

1 - Lobby	2.45 x 2.15	7 - Terrace	3.35 x 1.30
2 - Living Area	5.30 x 3.60	8 - Bedroom 2	3.60 x 3.60
3 - Kitchenette	2.25 x 2.00	9 - Bedroom 3	3.65x 3.75
4 - Corridor	3.60 x 1.20	10 - Dressing	2.00 x 1.70
5 - Bathroom	2.25 x 2.65	11 - Bathroom	2.00 x 1.80
6 - Bedroom 1	4.00 x 3.60	12 - Terrace	3.80 x 1.20





BUILDING ( A )

GROUND FLOOR PLAN



FIRST FLOOR

GROUND FLOOR

## DUPLEX

### TOTAL AREA 230 m<sup>2</sup>

#### GROUND FLOOR :

1 - Reception	10.15 x 5.05	5 - Bedroom	3.60 x 4.65
2 - Terrace	1.80 x 1.40	6 - Dressing	2.40 x 1.90
3 - Bathroom	2.55 x 1.90	7 - Bathroom	3.30 x 1.45
4 - Kitchen	3.00 x 2.60		

#### FIRST FLOOR :

1 - Living Area	3.80 x 2.50	6 - Terrace	1.80 x 1.40
2 - Bathroom	2.50 x 2.55	7 - Bedroom 2	3.65 x 3.80
3 - Kitchenette	2.60 x 1.50	8 - Bedroom 3	4.65 x 4.50
4 - Corridor	5.00 x 1.10	9 - Bathroom	2.40 x 1.90
5 - Bedroom 1	3.80 x 3.65	10 - Terrace	3.30 x 1.40







FIRST FLOOR

GROUND FLOOR

## DUPLEX

### TOTAL AREA 230 m<sup>2</sup>

#### GROUND FLOOR :

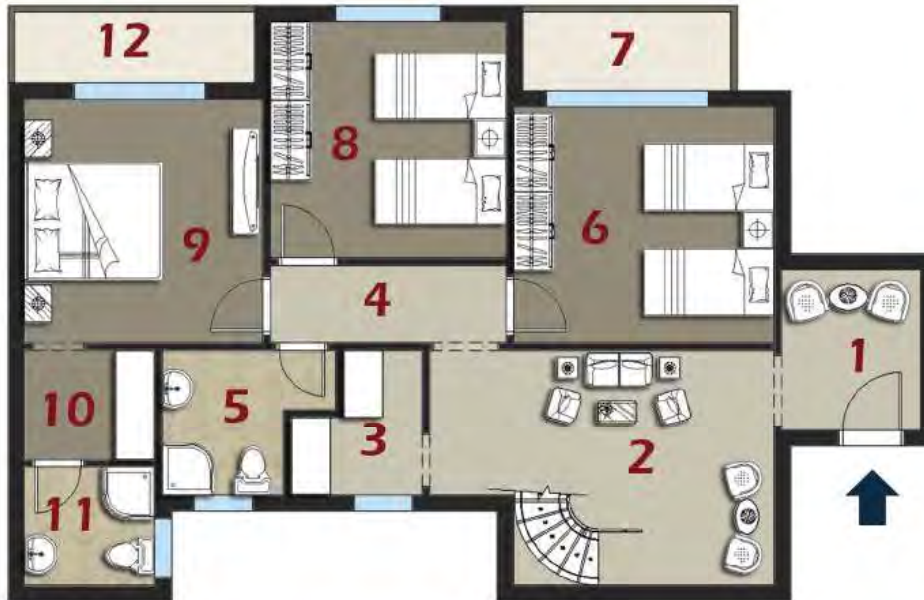
1 - Reception	10.15 x 5.05	5 - Bedroom	3.60 x 4.65
2 - Terrace	1.80 x 1.40	6 - Dressing	2.40 x 1.90
3 - Bathroom	2.55 x 1.90	7 - Bathroom	3.30 x 1.45
4 - Kitchen	3.00 x 2.60		

#### FIRST FLOOR :

1 - Living Area	3.80 x 2.50	6 - Terrace	1.80 x 1.40
2 - Bathroom	2.50 x 2.55	7 - Bedroom 2	3.65 x 3.80
3 - Kitchenette	2.60 x 1.50	8 - Bedroom 3	4.65 x 4.50
4 - Corridor	5.00 x 1.10	9 - Bathroom	2.40 x 1.90
5 - Bedroom 1	3.80 x 3.65	10 - Terrace	3.30 x 1.40







FIRST FLOOR

GROUND FLOOR

**DUPLEX**  
**TOTAL AREA 254 m<sup>2</sup>**

**GROUND FLOOR :**

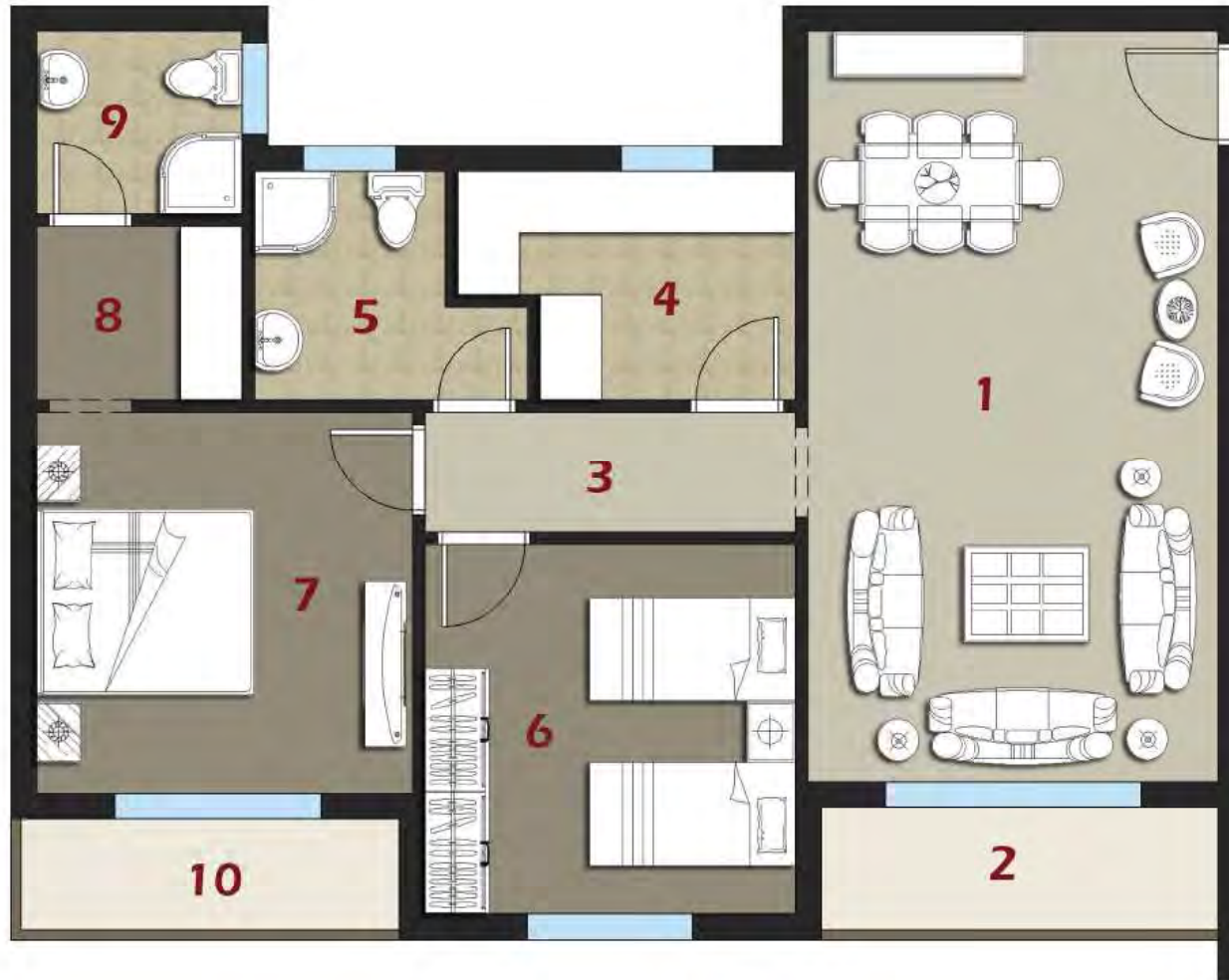
1 - Reception	7.35 x 4.00	6- Bedroom	3.65 x 3.75
2 - Reception	3.60 x 4.90	7 - Dressing	2.00 x 1.70
3 - Terrace	3.35 x 1.30	8 - Bathroom	2.00 x 1.80
4 - Kitchen	2.25 x 3.30	9 - Terrace	3.80 x 1.20
5 - Bathroom	2.25 x 2.65		

**FIRST FLOOR :**

1 - Lobby	2.45 x 2.15	7 - Terrace	3.35 x 1.30
2 - Living Area	5.30 x 3.60	8 - Bedroom 2	3.60 x 3.60
3 - Kitchenette	2.25 x 2.00	9 - Bedroom 3	3.65x 3.75
4 - Corridor	3.60 x 1.20	10 - Dressing	2.00 x 1.70
5 - Bathroom	2.25 x 2.65	11 - Bathroom	2.00 x 1.80
6 - Bedroom 1	4.00 x 3.60	12 - Terrace	3.80 x 1.20







**TOTAL AREA 125 m2**

<b>1 - Reception</b>	7.35 x 4.00
<b>2 - Terrace</b>	3.90 x 1.30
<b>3 - Corridor</b>	3.60 x 1.20
<b>4 - Kitchen</b>	2.25 x 3.30
<b>5 - Bathroom</b>	2.25 x 2.65
<b>6 - Bedroom 1</b>	3.60 x 3.60
<b>7 - Bedroom 2</b>	3.65 x 3.75
<b>8 - Dressing</b>	2.00 x 1.70
<b>9 - Bathroom</b>	2.00 x 1.80
<b>10 - Terrace</b>	1.20 x 3.80





**TOTAL AREA 160 m2**

<b>1 - Reception</b>	6.45 x 6.05
<b>2 - Terrace</b>	2.40 x 1.30
<b>3 - Corridor</b>	5.75 x 1.15
<b>4 - Bathroom</b>	2.90 x 2.55
<b>5 - kitchen</b>	3.00 x 2.60
<b>6 - Bedroom 1</b>	3.60 x 3.65
<b>7 - Bedroom 2</b>	3.60 x 4.10
<b>8 - Bedroom 3</b>	3.65 x 4.65
<b>9 - Bathroom</b>	2.40 x 1.90
<b>10 - Terrace</b>	2.50 x 1.65

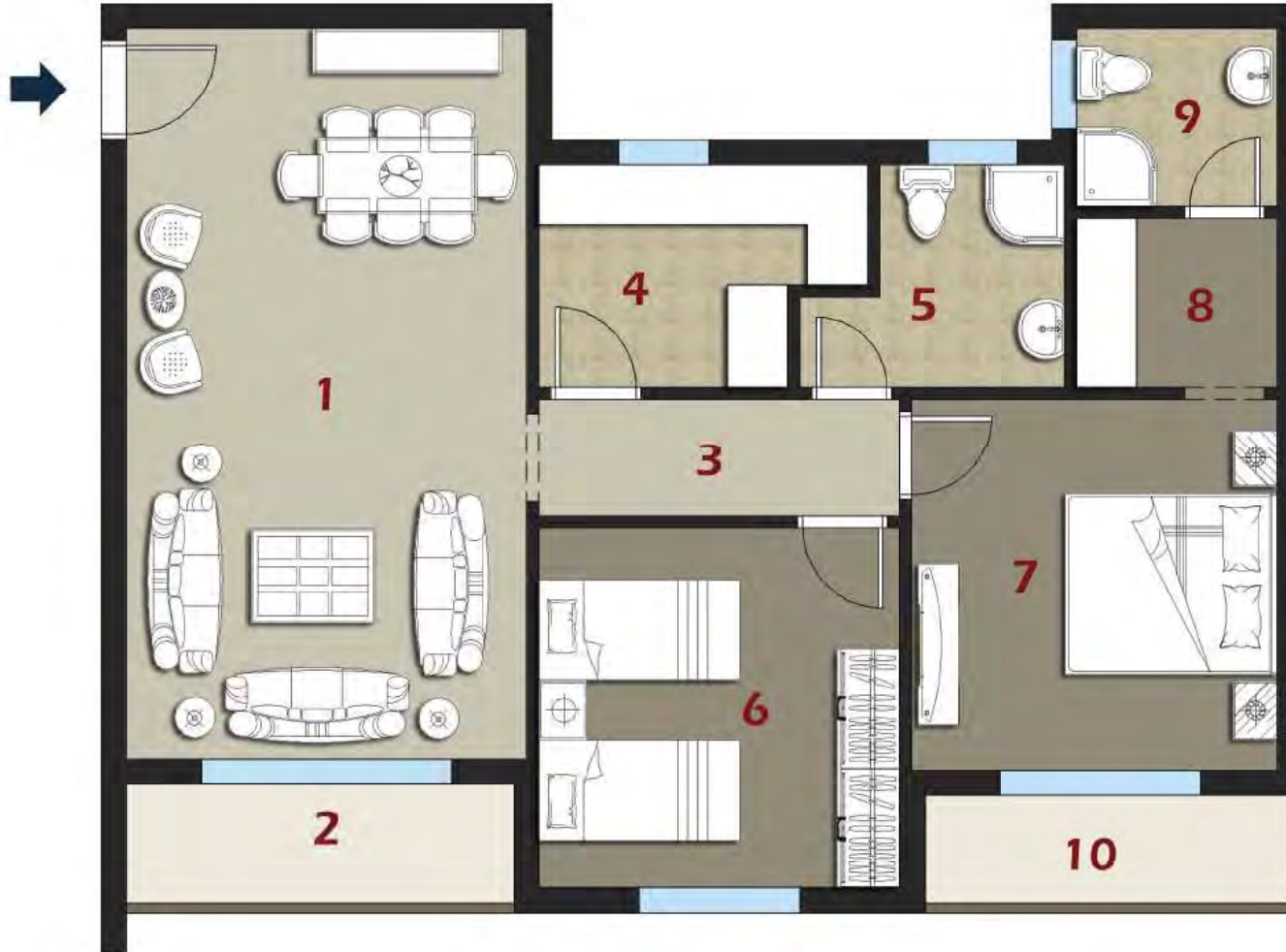




**TOTAL AREA 160 m2**

<b>1 - Reception</b>	6.45 x 6.05
<b>2 - Terrace</b>	2.40 x 1.30
<b>3 - Corridor</b>	5.75 x 1.15
<b>4 - Bathroom</b>	2.90 x 2.55
<b>5 - kitchen</b>	3.00 x 2.60
<b>6 - Bedroom 1</b>	3.60 x 3.65
<b>7 - Bedroom 2</b>	3.60 x 4.10
<b>8 - Bedroom 3</b>	3.65 x 4.65
<b>9 - Bathroom</b>	2.40 x 1.90
<b>10 - Terrace</b>	2.50 x 1.65





**TOTAL AREA 125 m<sup>2</sup>**

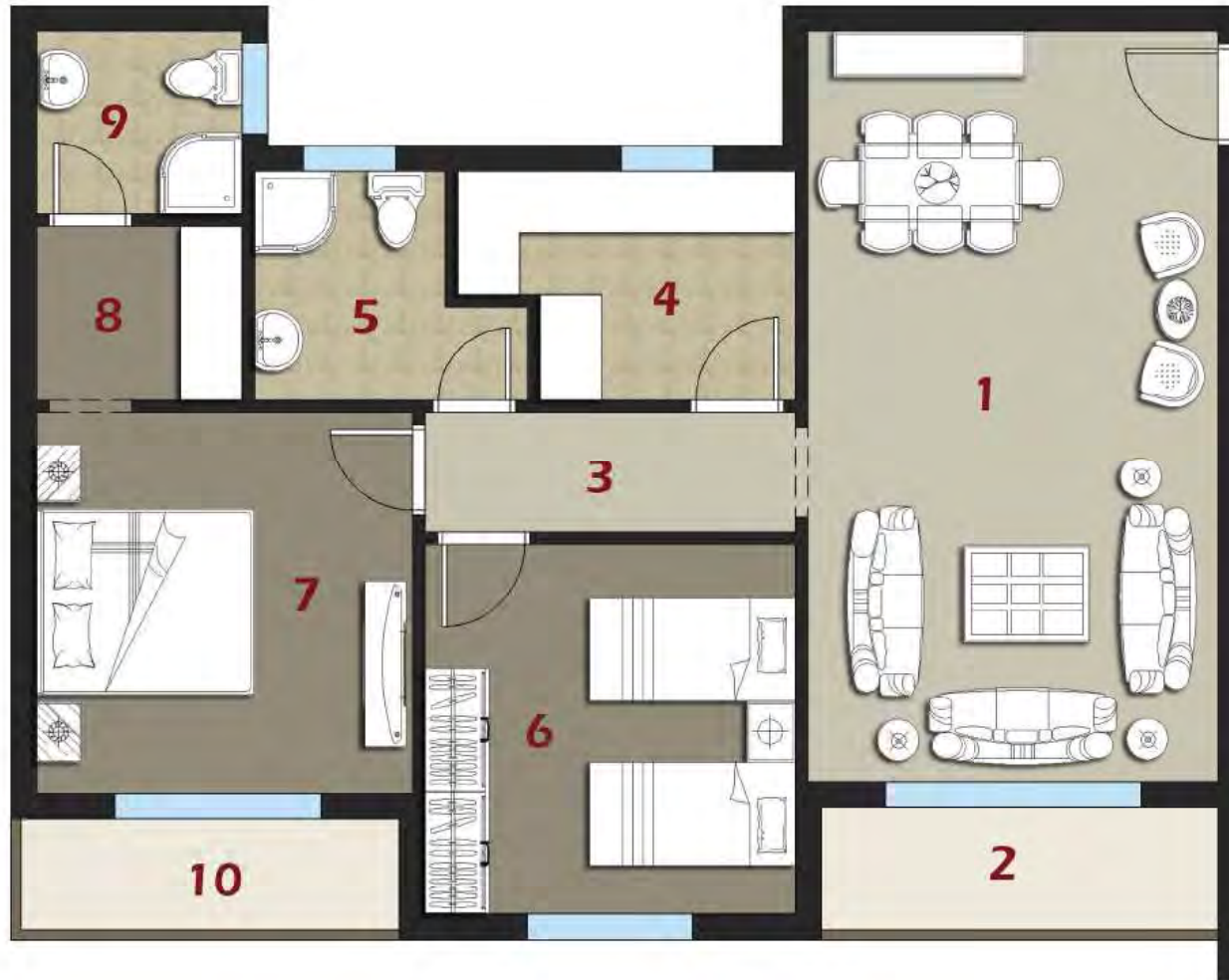
<b>1 - Reception</b>	7.35 x 4.00
<b>2 - Terrace</b>	3.90 x 1.30
<b>3 - Corridor</b>	3.60 x 1.20
<b>4 - Kitchen</b>	2.25 x 3.30
<b>5 - Bathroom</b>	2.25 x 2.65
<b>6 - Bedroom 1</b>	3.60 x 3.60
<b>7 - Bedroom 2</b>	3.65 x 3.75
<b>8 - Dressing</b>	2.00 x 1.70
<b>9 - Bathroom</b>	2.00 x 1.80
<b>10 - Terrace</b>	1.20 x 3.80



# FIRST FLOOR PLANS







**TOTAL AREA 125 m<sup>2</sup>**

<b>1 - Reception</b>	7.35 x 4.00
<b>2 - Terrace</b>	3.90 x 1.30
<b>3 - Corridor</b>	3.60 x 1.20
<b>4 - Kitchen</b>	2.25 x 3.30
<b>5 - Bathroom</b>	2.25 x 2.65
<b>6 - Bedroom 1</b>	3.60 x 3.60
<b>7 - Bedroom 2</b>	3.65 x 3.75
<b>8 - Dressing</b>	2.00 x 1.70
<b>9 - Bathroom</b>	2.00 x 1.80
<b>10 - Terrace</b>	1.20 x 3.80





**TOTAL AREA 160 m2**

<b>1 - Reception</b>	6.45 x 6.05
<b>2 - Terrace</b>	2.40 x 1.30
<b>3 - Corridor</b>	5.75 x 1.15
<b>4 - Bathroom</b>	2.90 x 2.55
<b>5 - kitchen</b>	3.00 x 2.60
<b>6 - Bedroom 1</b>	3.60 x 3.65
<b>7 - Bedroom 2</b>	3.60 x 4.10
<b>8 - Bedroom 3</b>	3.65 x 4.65
<b>9 - Bathroom</b>	2.40 x 1.90
<b>10 - Terrace</b>	2.50 x 1.65

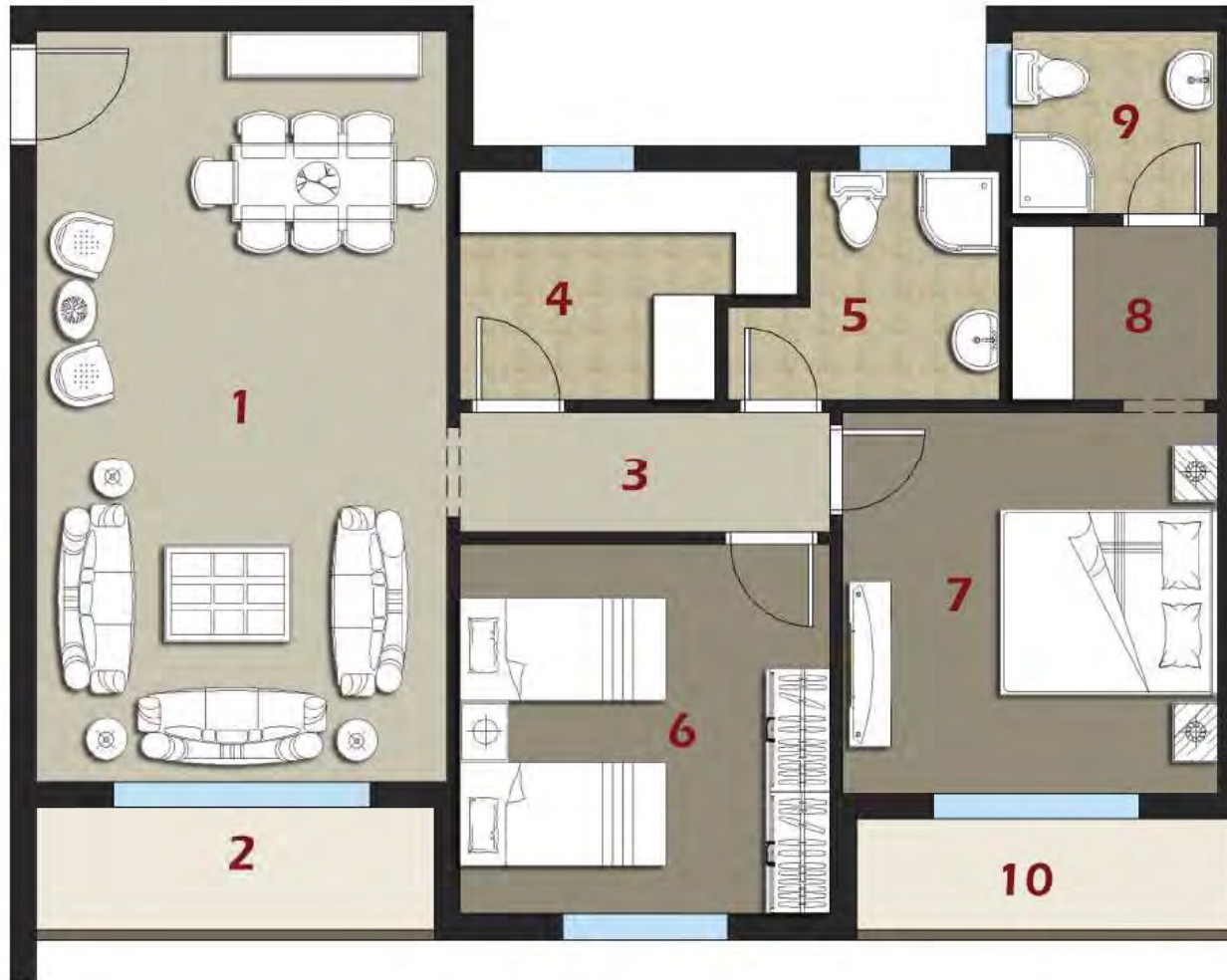




**TOTAL AREA 160 m<sup>2</sup>**

<b>1 - Reception</b>	6.45 x 6.05
<b>2 - Terrace</b>	2.40 x 1.30
<b>3 - Corridor</b>	5.75 x 1.15
<b>4 - Bathroom</b>	2.90 x 2.55
<b>5 - kitchen</b>	3.00 x 2.60
<b>6 - Bedroom 1</b>	3.60 x 3.65
<b>7 - Bedroom 2</b>	3.60 x 4.10
<b>8 - Bedroom 3</b>	3.65 x 4.65
<b>9 - Bathroom</b>	2.40 x 1.90
<b>10 - Terrace</b>	2.50 x 1.65





**TOTAL AREA 125 m<sup>2</sup>**

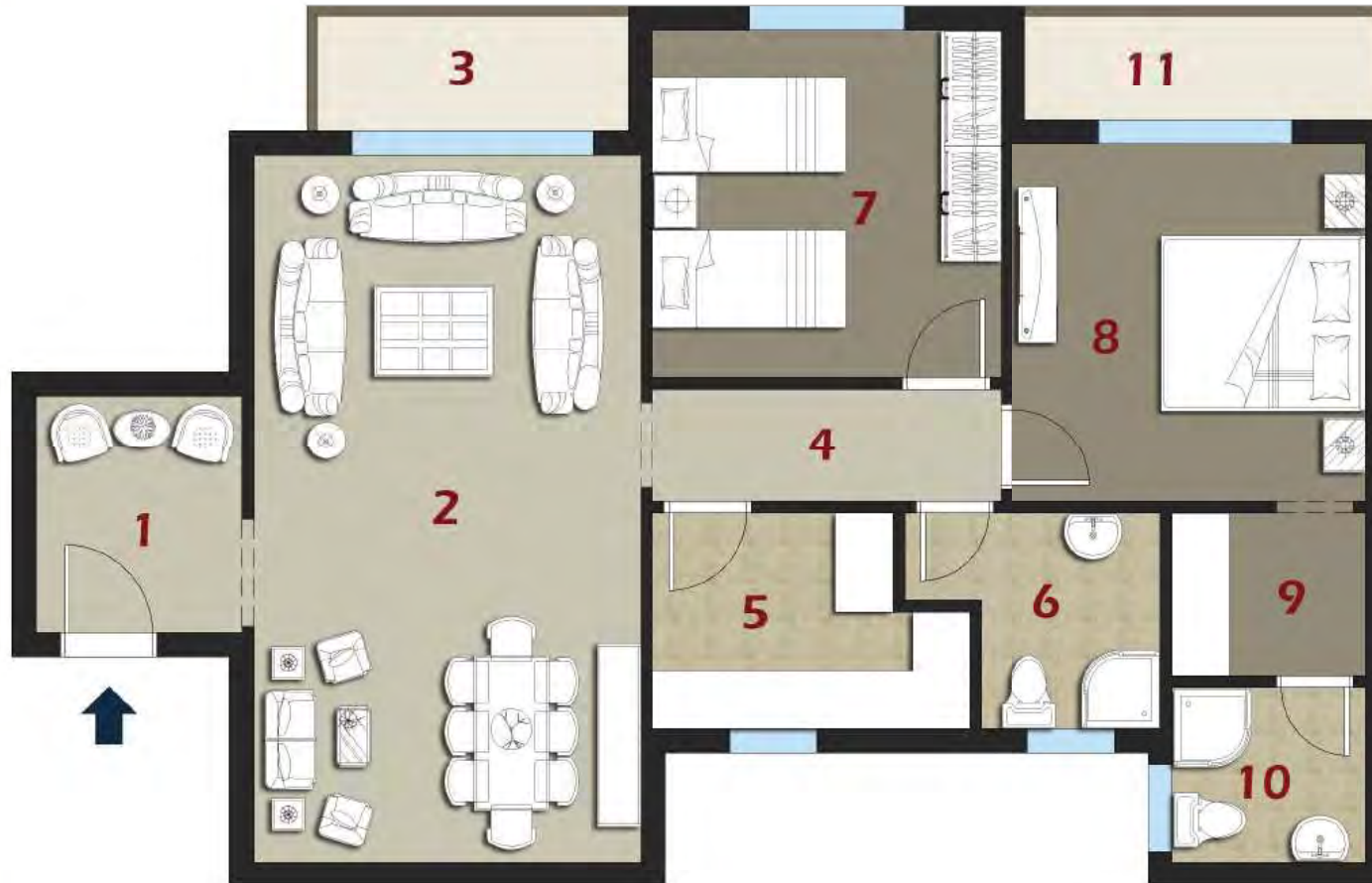
<b>1 - Reception</b>	7.35 x 4.00
<b>2 - Terrace</b>	3.90 x 1.30
<b>3 - Corridor</b>	3.60 x 1.20
<b>4 - Kitchen</b>	2.25 x 3.30
<b>5 - Bathroom</b>	2.25 x 2.65
<b>6 - Bedroom 1</b>	3.60 x 3.60
<b>7 - Bedroom 2</b>	3.65 x 3.75
<b>8 - Dressing</b>	2.00 x 1.70
<b>9 - Bathroom</b>	2.00 x 1.80
<b>10 - Terrace</b>	1.20 x 3.80



# TYPICAL FLOOR PLANS







**TOTAL AREA 129 m<sup>2</sup>**

<b>1 - Lobby</b>	2.50 x 2.15
<b>2 - Reception</b>	7.35 x 4.00
<b>3 - Terrace</b>	3.90 x 1.30
<b>4 - Corridor</b>	3.60 x 1.20
<b>5 - Kitchen</b>	2.25 x 3.30
<b>6 - Bathroom</b>	2.25 x 2.65
<b>7 - Bedroom 1</b>	3.60 x 3.60
<b>8 - Bedroom 2</b>	3.65 x 3.75
<b>9 - Dressing</b>	2.00 x 1.70
<b>10 - Bathroom</b>	2.00 x 1.80
<b>11 - Terrace</b>	1.20 x 3.80

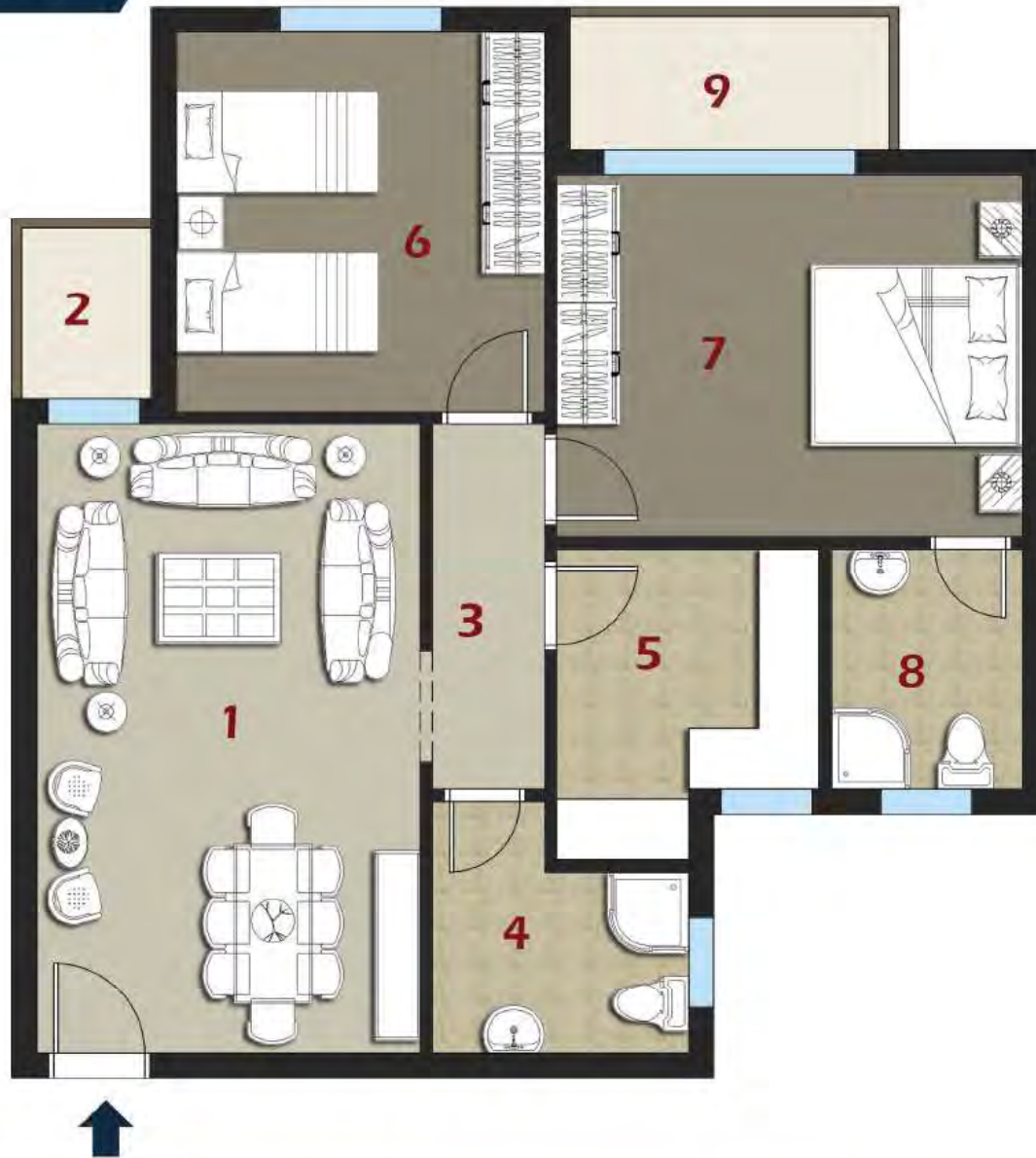




**TOTAL AREA 115 m<sup>2</sup>**

<b>1 - Reception</b>	6.25 x 3.80
<b>2 - Terrace</b>	1.80 x 1.40
<b>3 - Corridor</b>	3.65 x 1.15
<b>4 - Bathroom</b>	2.50 x 2.55
<b>5 - Kitchen</b>	3.10 x 2.60
<b>6 - Bedroom 1</b>	3.80 x 3.65
<b>7 - Bedroom 2</b>	4.65 x 3.60
<b>8 - Bathroom</b>	2.40 x 1.90
<b>9 - Terrace</b>	3.30 x 1.40





BUILDING (A)

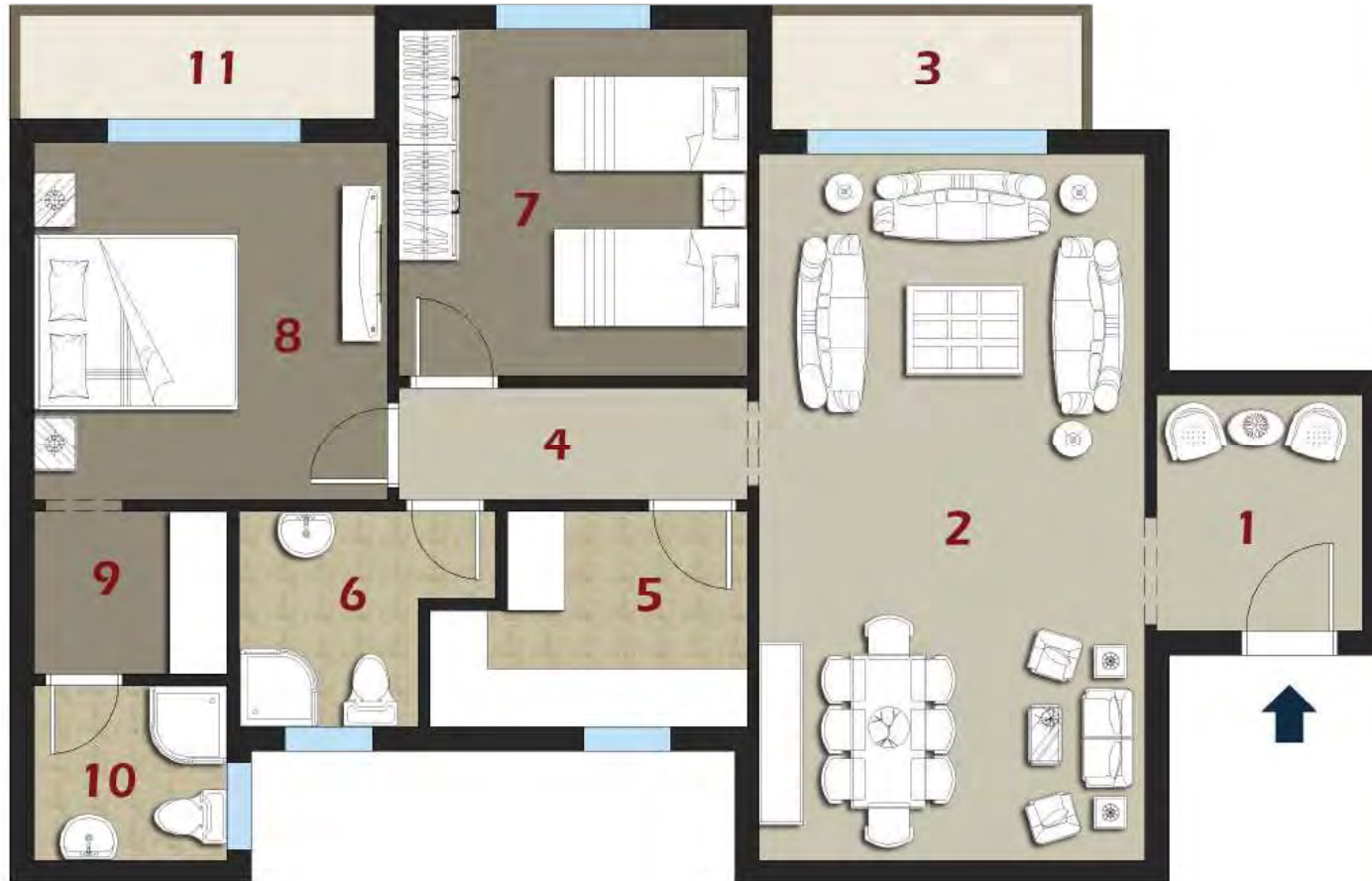
TYPICAL FLOOR PLAN



TOTAL AREA 115 m<sup>2</sup>

1 - Reception	6.25 x 3.80
2 - Terrace	1.80 x 1.40
3 - Corridor	3.65 x 1.15
4 - Bathroom	2.50 x 2.55
5 - Kitchen	3.10 x 2.60
6 - Bedroom 1	3.80 x 3.65
7 - Bedroom 2	4.65 x 3.60
8 - Bathroom	2.40 x 1.90
9 - Terrace	3.30 x 1.40

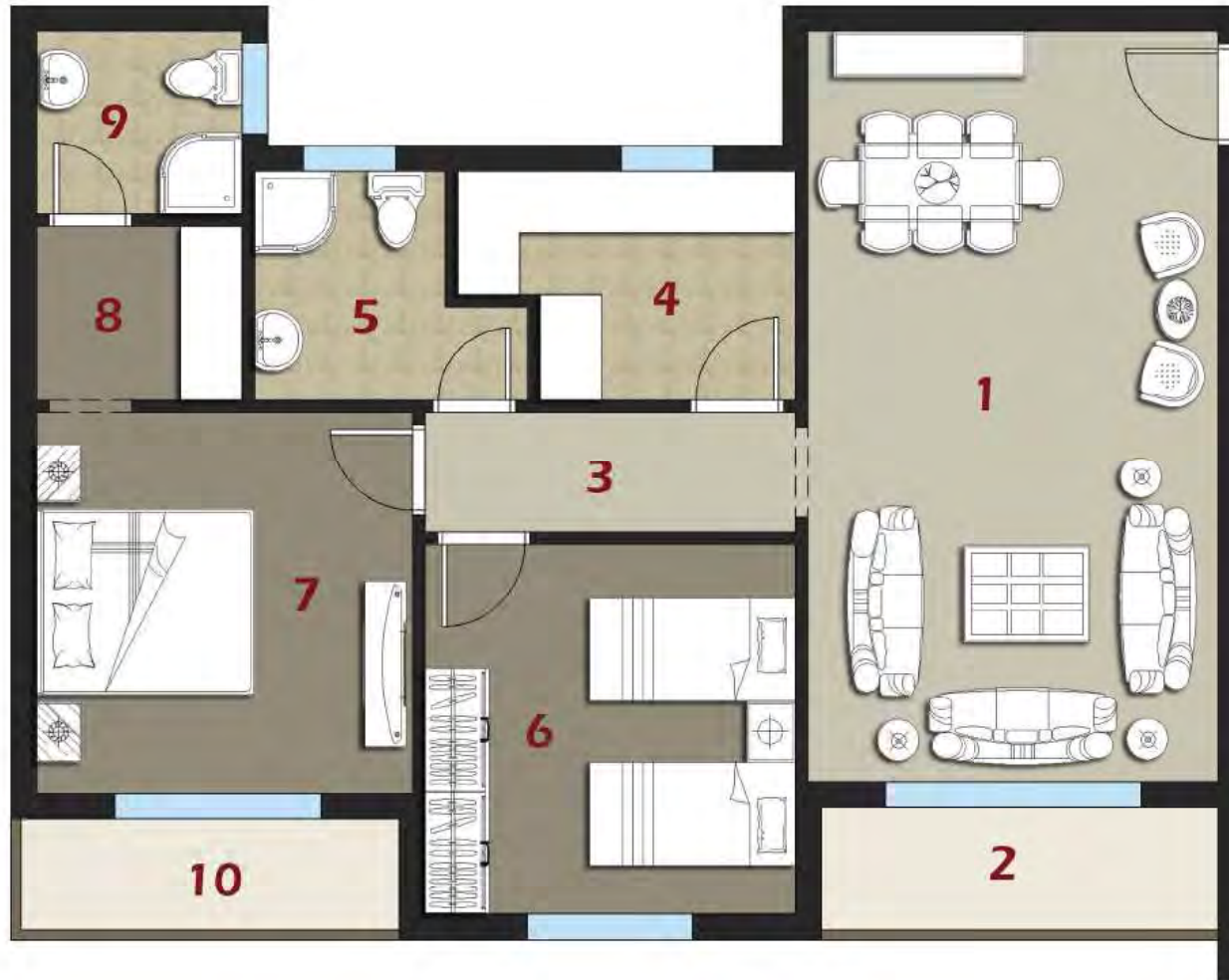




**TOTAL AREA 129 m<sup>2</sup>**

<b>1 - Lobby</b>	2.50 x 2.15
<b>2 - Reception</b>	7.35 x 4.00
<b>3 - Terrace</b>	3.90 x 1.30
<b>4 - Corridor</b>	3.60 x 1.20
<b>5 - Kitchen</b>	2.25 x 3.30
<b>6 - Bathroom</b>	2.25 x 2.65
<b>7 - Bedroom 1</b>	3.60 x 3.60
<b>8 - Bedroom 2</b>	3.65 x 3.75
<b>9 - Dressing</b>	2.00 x 1.70
<b>10 - Bathroom</b>	2.00 x 1.80
<b>11 - Terrace</b>	1.20 x 3.80





**TOTAL AREA 125 m<sup>2</sup>**

<b>1 - Reception</b>	7.35 x 4.00
<b>2 - Terrace</b>	3.90 x 1.30
<b>3 - Corridor</b>	3.60 x 1.20
<b>4 - Kitchen</b>	2.25 x 3.30
<b>5 - Bathroom</b>	2.25 x 2.65
<b>6 - Bedroom 1</b>	3.60 x 3.60
<b>7 - Bedroom 2</b>	3.65 x 3.75
<b>8 - Dressing</b>	2.00 x 1.70
<b>9 - Bathroom</b>	2.00 x 1.80
<b>10 - Terrace</b>	1.20 x 3.80





**TOTAL AREA 160 m<sup>2</sup>**

<b>1 - Reception</b>	6.45 x 6.05
<b>2 - Terrace</b>	2.40 x 1.30
<b>3 - Corridor</b>	5.75 x 1.15
<b>4 - Bathroom</b>	2.90 x 2.55
<b>5 - kitchen</b>	3.00 x 2.60
<b>6 - Bedroom 1</b>	3.60 x 3.65
<b>7 - Bedroom 2</b>	3.60 x 4.10
<b>8 - Bedroom 3</b>	3.65 x 4.65
<b>9 - Bathroom</b>	2.40 x 1.90
<b>10 - Terrace</b>	2.50 x 1.65

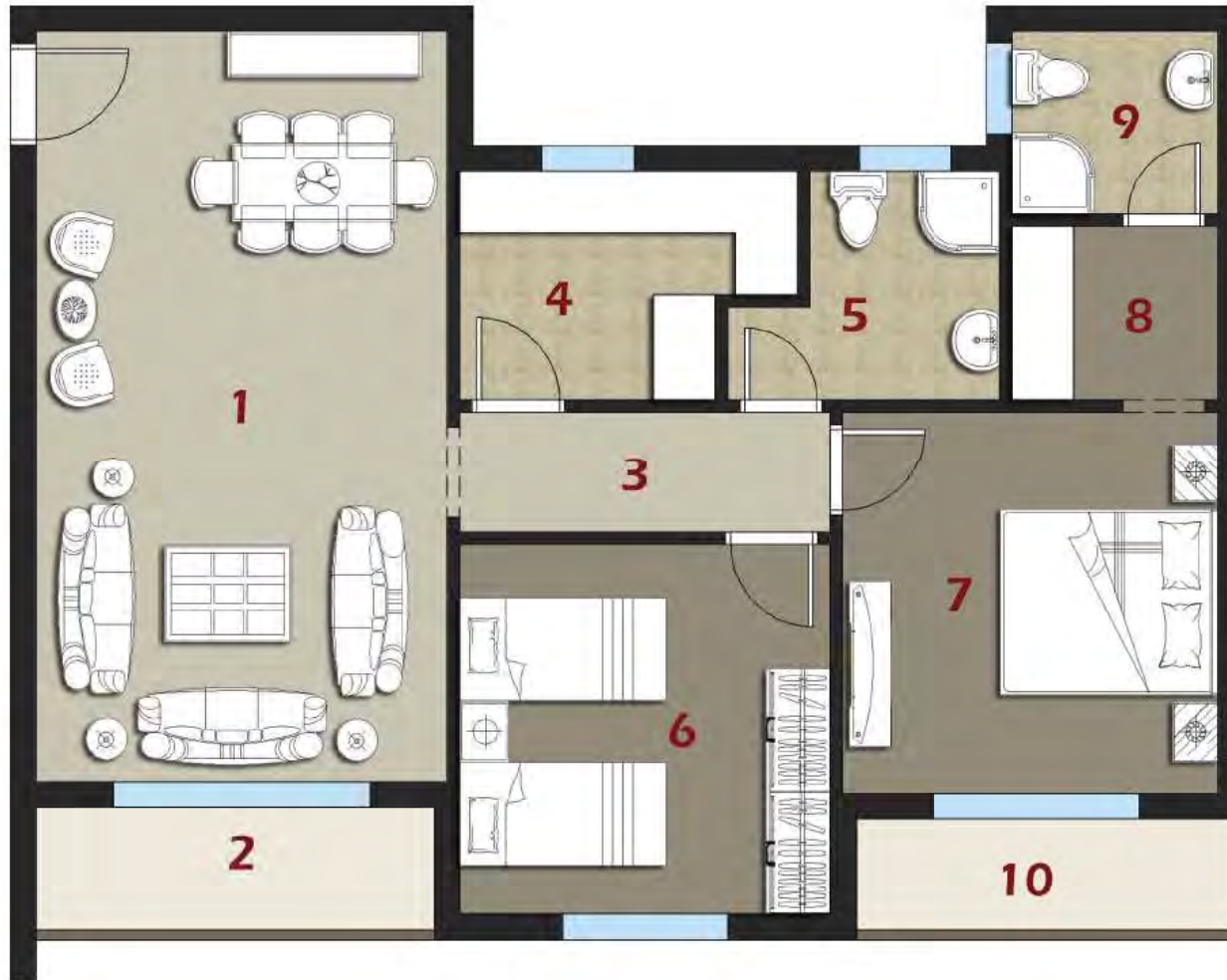




**TOTAL AREA 160 m<sup>2</sup>**

<b>1 - Reception</b>	6.45 x 6.05
<b>2 - Terrace</b>	2.40 x 1.30
<b>3 - Corridor</b>	5.75 x 1.15
<b>4 - Bathroom</b>	2.90 x 2.55
<b>5 - kitchen</b>	3.00 x 2.60
<b>6 - Bedroom 1</b>	3.60 x 3.65
<b>7 - Bedroom 2</b>	3.60 x 4.10
<b>8 - Bedroom 3</b>	3.65 x 4.65
<b>9 - Bathroom</b>	2.40 x 1.90
<b>10 - Terrace</b>	2.50 x 1.65





**TOTAL AREA 125 m<sup>2</sup>**

<b>1 - Reception</b>	7.35 x 4.00
<b>2 - Terrace</b>	3.90 x 1.30
<b>3 - Corridor</b>	3.60 x 1.20
<b>4 - Kitchen</b>	2.25 x 3.30
<b>5 - Bathroom</b>	2.25 x 2.65
<b>6 - Bedroom 1</b>	3.60 x 3.60
<b>7 - Bedroom 2</b>	3.65 x 3.75
<b>8 - Dressing</b>	2.00 x 1.70
<b>9 - Bathroom</b>	2.00 x 1.80
<b>10 - Terrace</b>	1.20 x 3.80



# BUILDING ( B )

## GROUND FLOOR PLANS







**TOTAL AREA 185 m2**

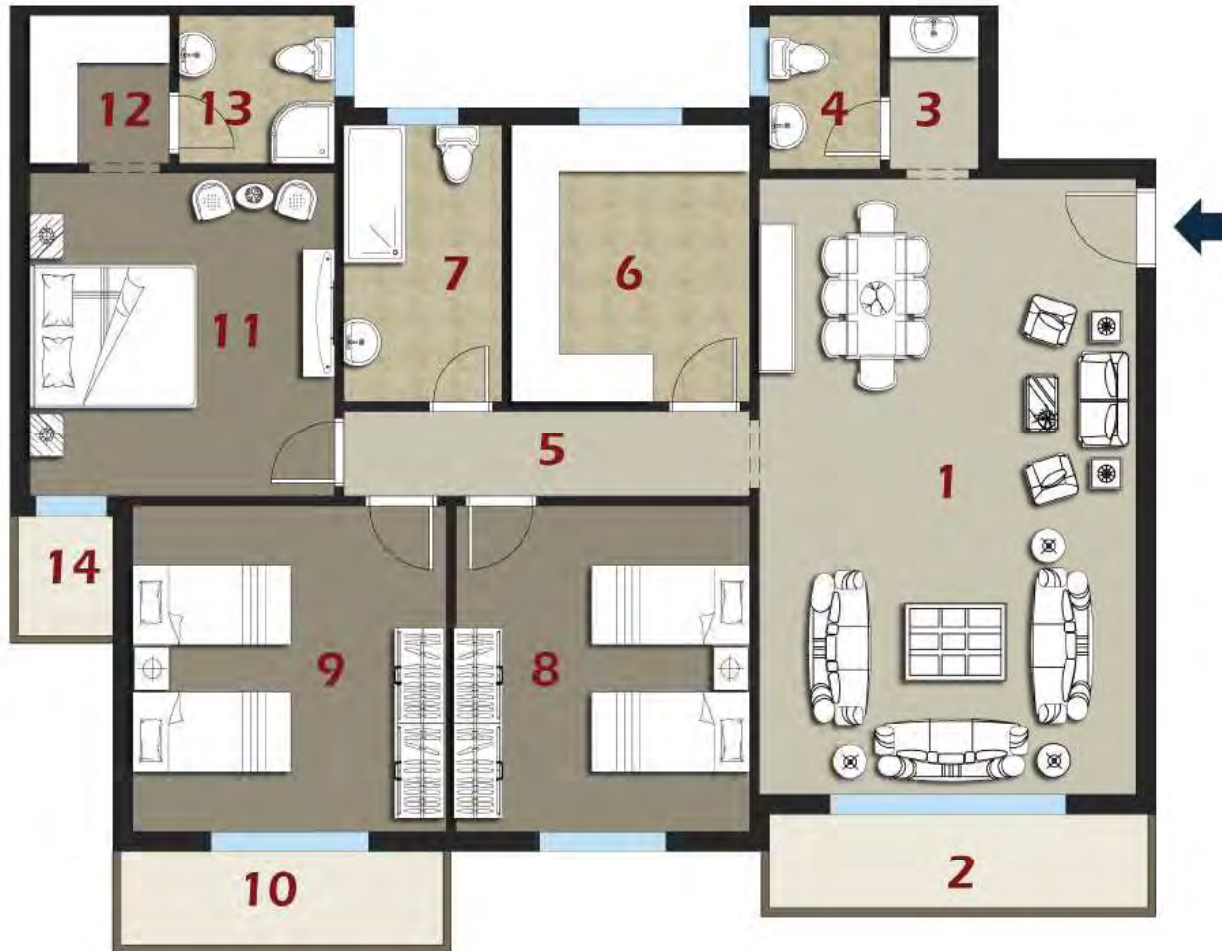
<b>1 - Reception</b>	7.80 x 4.80
<b>2 - Terrace</b>	5.00 x 1.30
<b>3 - Wash Area</b>	2.00 x 1.15
<b>4 - Guest Toilet</b>	2.00 x 1.40
<b>5 - Corridor</b>	5.15 x 1.10
<b>6 - kitchen</b>	3.50 x 3.00
<b>7 - Bathroom</b>	3.50 x 2.00
<b>8 - Bedroom 1</b>	4.10 x 3.75
<b>9 - Bedroom 2</b>	4.10 x 3.95
<b>10 - Terrace</b>	4.30 x 1.30
<b>11 - Bedroom</b>	4.10 x 3.85
<b>12 - Dressing</b>	1.90 x 1.80
<b>13 - Bathroom</b>	1.90 x 1.95
<b>14 - Terrace</b>	1.60 x 1.30



**TOTAL AREA 185 m2**

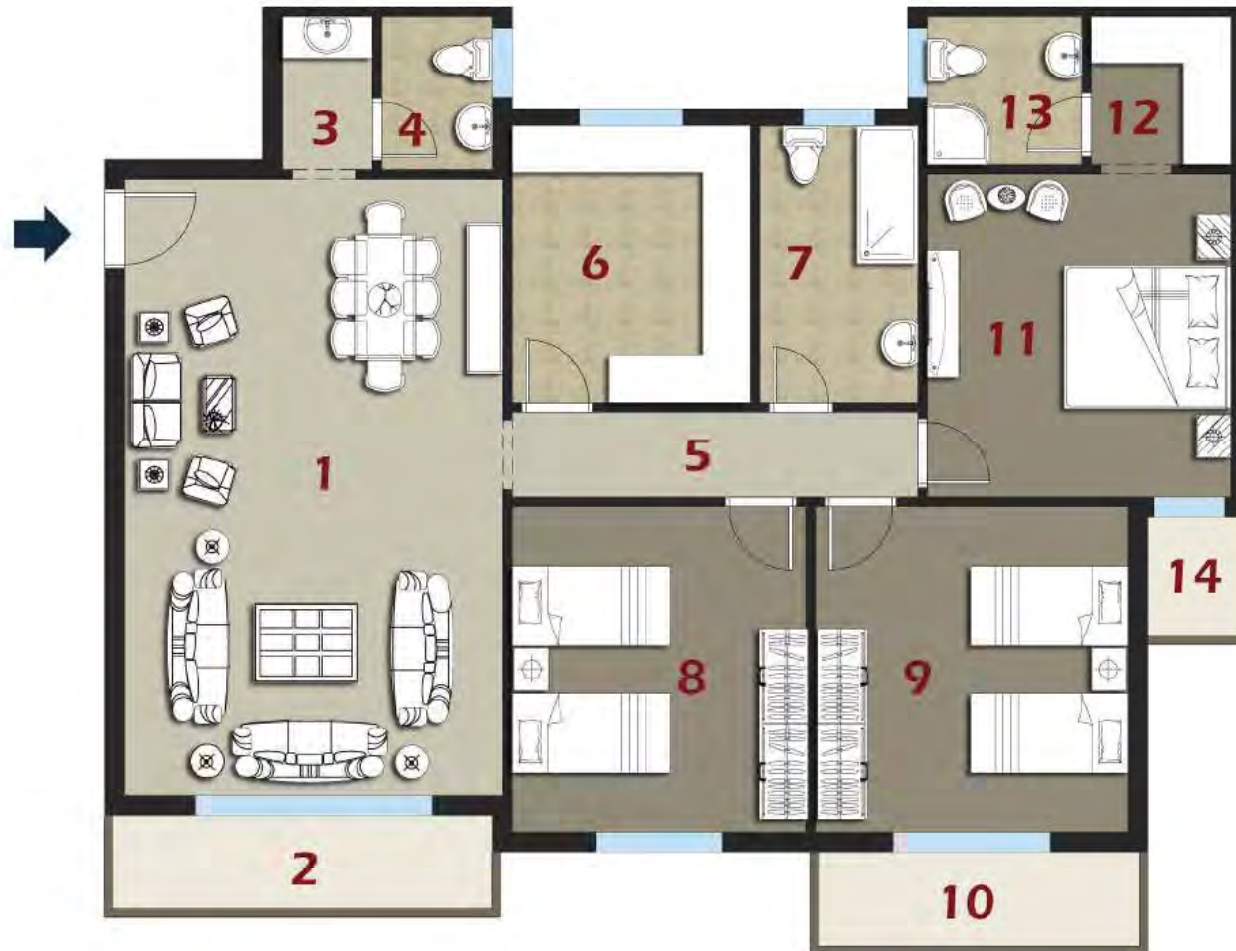
<b>1 - Reception</b>	7.80 x 4.80
<b>2 - Terrace</b>	5.00 x 1.30
<b>3 - Wash Area</b>	2.00 x 1.15
<b>4 - Guest Toilet</b>	2.00 x 1.40
<b>5 - Corridor</b>	5.15 x 1.10
<b>6 - kitchen</b>	3.50 x 3.00
<b>7 - Bathroom</b>	3.50 x 2.00
<b>8 - Bedroom 1</b>	4.10 x 3.75
<b>9 - Bedroom 2</b>	4.10 x 3.95
<b>10 - Terrace</b>	4.30 x 1.30
<b>11 - Bedroom</b>	4.10 x 3.85
<b>12 - Dressing</b>	1.90 x 1.80
<b>13 - Bathroom</b>	1.90 x 1.95
<b>14 - Terrace</b>	1.60 x 1.30





**TOTAL AREA 185 m<sup>2</sup>**

<b>1 - Reception</b>	7.80 x 4.80
<b>2 - Terrace</b>	5.00 x 1.30
<b>3 - Wash Area</b>	2.00 x 1.15
<b>4 - Guest Toilet</b>	2.00 x 1.40
<b>5 - Corridor</b>	5.15 x 1.10
<b>6 - kitchen</b>	3.50 x 3.00
<b>7 - Bathroom</b>	3.50 x 2.00
<b>8 - Bedroom 1</b>	4.10 x 3.75
<b>9 - Bedroom 2</b>	4.10 x 3.95
<b>10 - Terrace</b>	4.30 x 1.30
<b>11 - Bedroom</b>	4.10 x 3.85
<b>12 - Dressing</b>	1.90 x 1.80
<b>13 - Bathroom</b>	1.90 x 1.95
<b>14 - Terrace</b>	1.60 x 1.30



**TOTAL AREA 185 m2**

<b>1 - Reception</b>	7.80 x 4.80
<b>2 - Terrace</b>	5.00 x 1.30
<b>3 - Wash Area</b>	2.00 x 1.15
<b>4 - Guest Toilet</b>	2.00 x 1.40
<b>5 - Corridor</b>	5.15 x 1.10
<b>6 - kitchen</b>	3.50 x 3.00
<b>7 - Bathroom</b>	3.50 x 2.00
<b>8 - Bedroom 1</b>	4.10 x 3.75
<b>9 - Bedroom 2</b>	4.10 x 3.95
<b>10 - Terrace</b>	4.30 x 1.30
<b>11 - Bedroom</b>	4.10 x 3.85
<b>12 - Dressing</b>	1.90 x 1.80
<b>13 - Bathroom</b>	1.90 x 1.95
<b>14 - Terrace</b>	1.60 x 1.30



# FIRST FLOOR PLANS

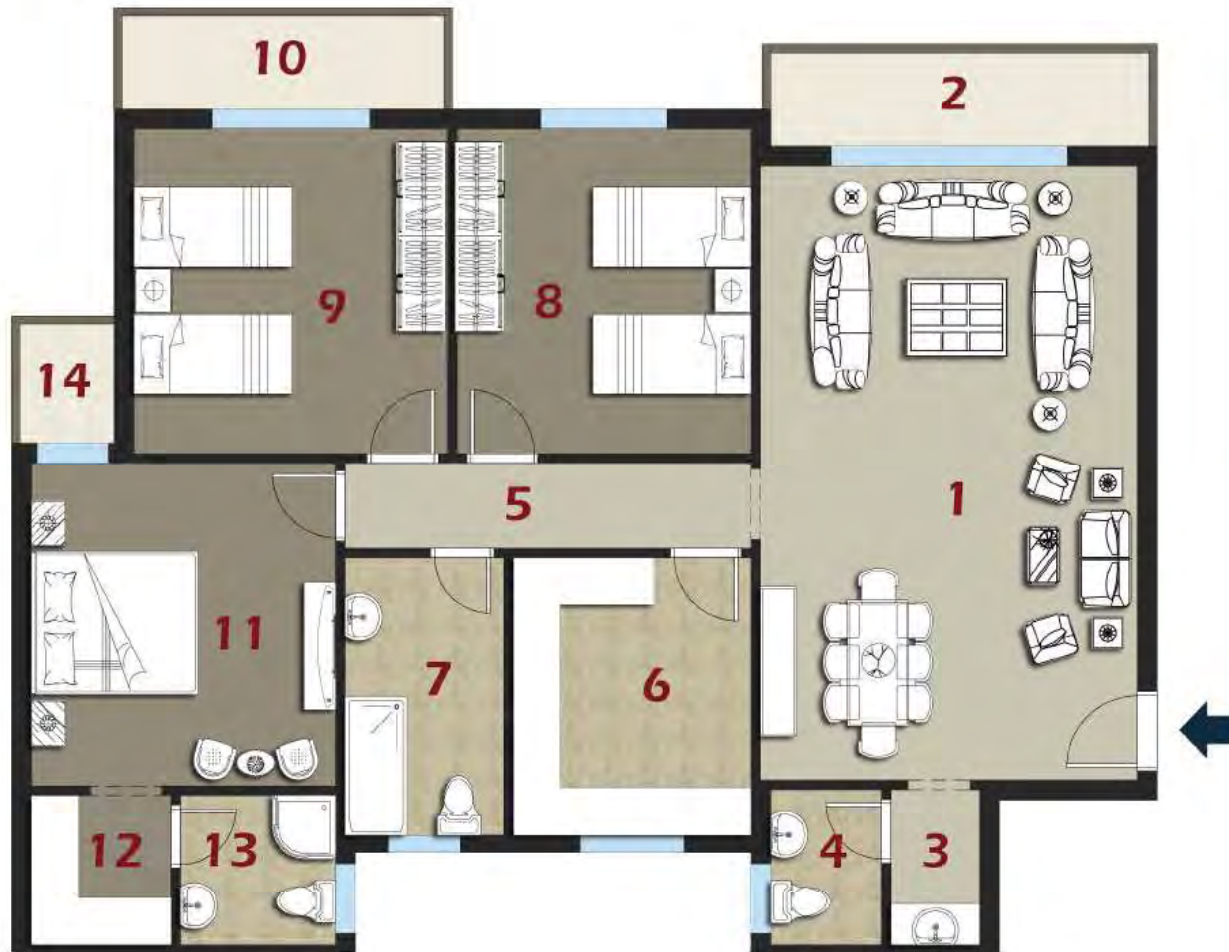




**TOTAL AREA 185 m<sup>2</sup>**

<b>1 - Reception</b>	7.80 x 4.80
<b>2 - Terrace</b>	5.00 x 1.30
<b>3 - Wash Area</b>	2.00 x 1.15
<b>4 - Guest Toilet</b>	2.00 x 1.40
<b>5 - Corridor</b>	5.15 x 1.10
<b>6 - kitchen</b>	3.50 x 3.00
<b>7 - Bathroom</b>	3.50 x 2.00
<b>8 - Bedroom 1</b>	4.10 x 3.75
<b>9 - Bedroom 2</b>	4.10 x 3.95
<b>10 - Terrace</b>	4.30 x 1.30
<b>11 - Bedroom</b>	4.10 x 3.85
<b>12 - Dressing</b>	1.90 x 1.80
<b>13 - Bathroom</b>	1.90 x 1.95
<b>14 - Terrace</b>	1.60 x 1.30





**TOTAL AREA 185 m<sup>2</sup>**

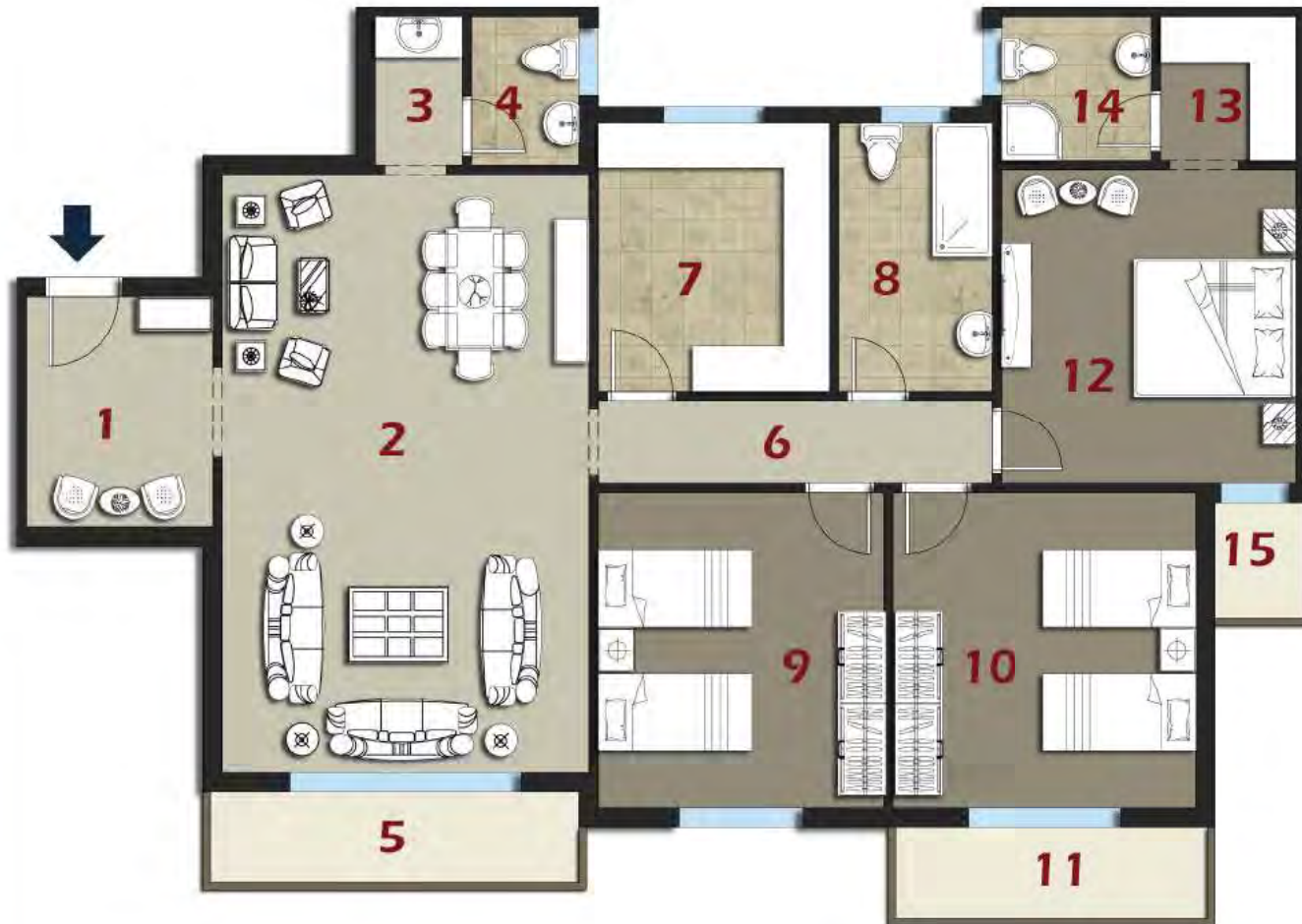
<b>1 - Reception</b>	7.80 x 4.80
<b>2 - Terrace</b>	5.00 x 1.30
<b>3 - Wash Area</b>	2.00 x 1.15
<b>4 - Guest Toilet</b>	2.00 x 1.40
<b>5 - Corridor</b>	5.15 x 1.10
<b>6 - kitchen</b>	3.50 x 3.00
<b>7 - Bathroom</b>	3.50 x 2.00
<b>8 - Bedroom 1</b>	4.10 x 3.75
<b>9 - Bedroom 2</b>	4.10 x 3.95
<b>10 - Terrace</b>	4.30 x 1.30
<b>11 - Bedroom</b>	4.10 x 3.85
<b>12 - Dressing</b>	1.90 x 1.80
<b>13 - Bathroom</b>	1.90 x 1.95
<b>14 - Terrace</b>	1.60 x 1.30



**TOTAL AREA 185 m<sup>2</sup>**

<b>1 - Reception</b>	7.80 x 4.80
<b>2 - Terrace</b>	5.00 x 1.30
<b>3 - Wash Area</b>	2.00 x 1.15
<b>4 - Guest Toilet</b>	2.00 x 1.40
<b>5 - Corridor</b>	5.15 x 1.10
<b>6 - kitchen</b>	3.50 x 3.00
<b>7 - Bathroom</b>	3.50 x 2.00
<b>8 - Bedroom 1</b>	4.10 x 3.75
<b>9 - Bedroom 2</b>	4.10 x 3.95
<b>10 - Terrace</b>	4.30 x 1.30
<b>11 - Bedroom</b>	4.10 x 3.85
<b>12 - Dressing</b>	1.90 x 1.80
<b>13 - Bathroom</b>	1.90 x 1.95
<b>14 - Terrace</b>	1.60 x 1.30





**TOTAL AREA 193 m<sup>2</sup>**

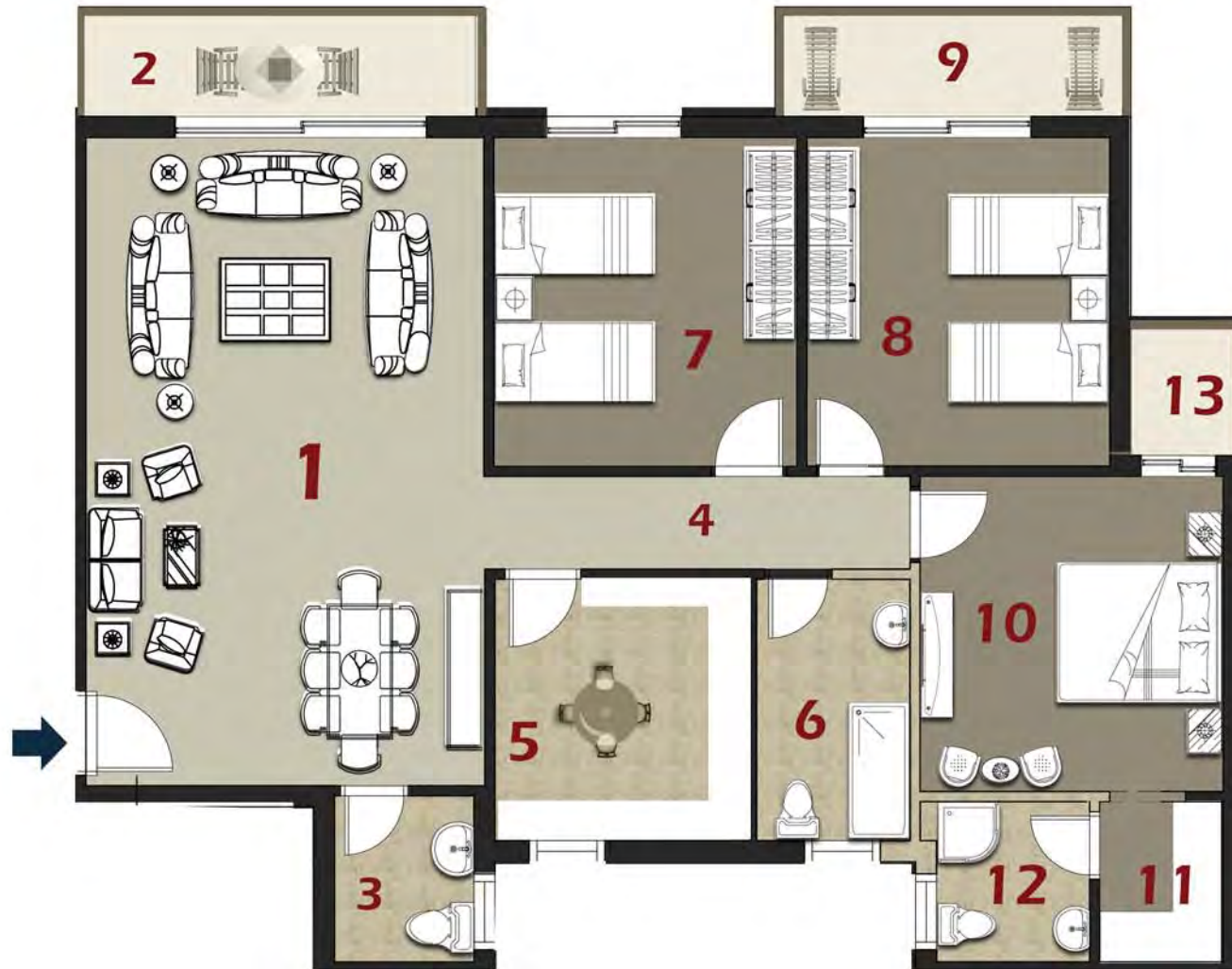
<b>1 - Lobby</b>	3.00 x 2.45
<b>2 - Reception</b>	7.80 x 4.80
<b>3 - Terrace</b>	5.00 x 1.30
<b>4 - Wash Area</b>	2.00 x 1.15
<b>5 - Guest Toilet</b>	2.00 x 1.40
<b>6 - Corridor</b>	5.15 x 1.10
<b>7 - kitchen</b>	3.50 x 3.00
<b>8 - Bathroom</b>	3.50 x 2.00
<b>9 - Bedroom 1</b>	4.10 x 3.75
<b>10 - Bedroom 2</b>	4.10 x 3.95
<b>11 - Terrace</b>	4.30 x 1.30
<b>15 - Bedroom</b>	4.10 x 3.85
<b>13 - Dressing</b>	1.90 x 1.80
<b>14 - Bathroom</b>	1.90 x 1.95
<b>15 - Terrace</b>	1.60 x 1.30

# BUILDING (C)

## GROUND FLOOR PLANS



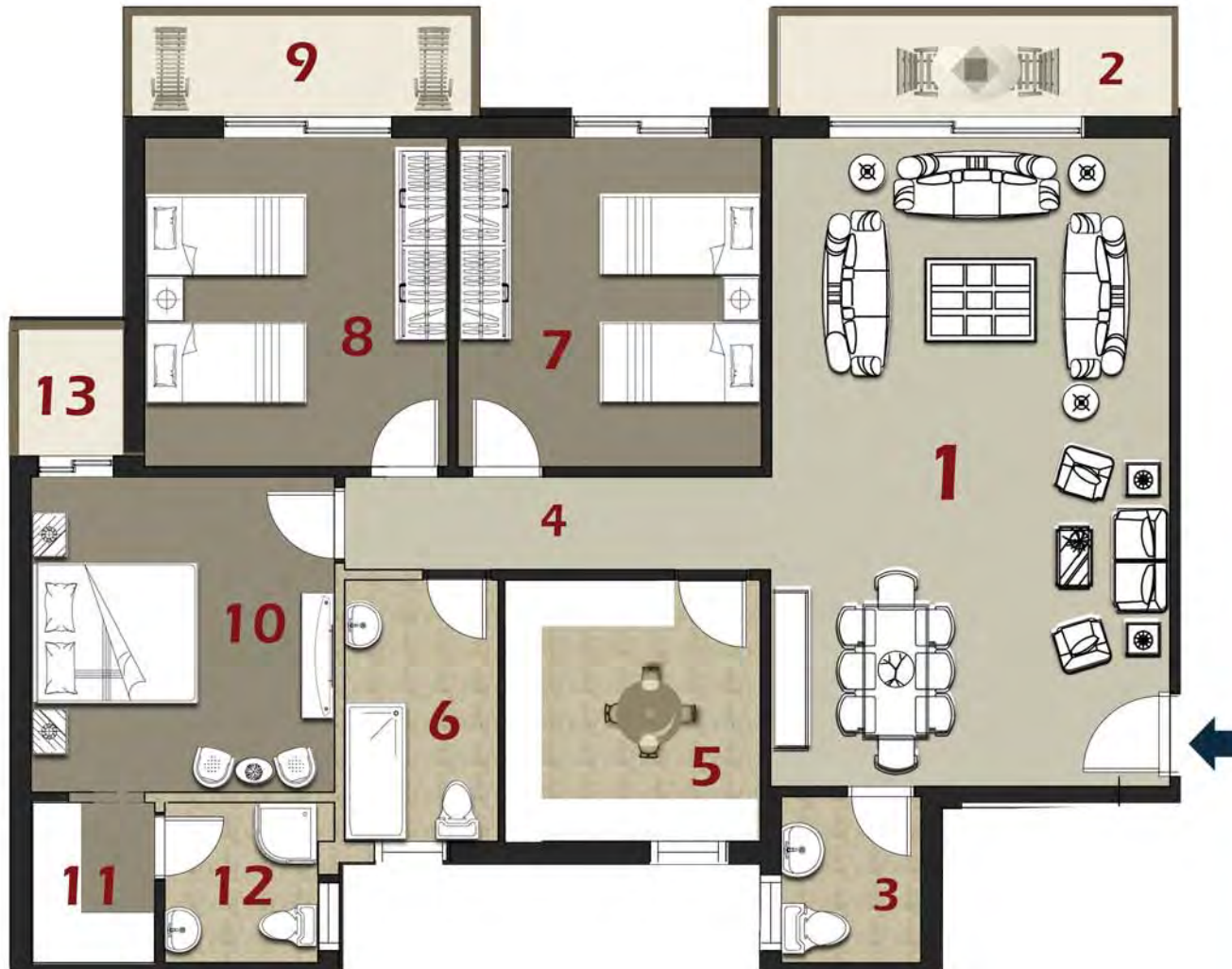




**TOTAL AREA 168 m<sup>2</sup>**

<b>1 - Reception</b>	7.69x 4.73
<b>2 - Terrace</b>	4.85 x 1.30
<b>3 - Guest Toilet</b>	1.97 x 1.66
<b>4 - Corridor</b>	5.05 x 1.10
<b>5 - kitchen</b>	3.10 x 3.03
<b>6 - Bathroom</b>	3.10 x 1.82
<b>7 - Bedroom 1</b>	3.90x 3.60
<b>8 - Bedroom 2</b>	3.90x 3.60
<b>9 - Terrace</b>	4.23 x 1.30
<b>10 - M.Bedroom</b>	3.74 x 3.60
<b>11 - Dressing</b>	1.90 x 1.47
<b>12 - Bathroom</b>	1.90 x 1.82
<b>13 - Terrace</b>	1.60 x 1.35





**TOTAL AREA 168 m<sup>2</sup>**

<b>1 - Reception</b>	7.69x 4.73
<b>2 - Terrace</b>	4.85 x 1.30
<b>3 - Guest Toilet</b>	1.97 x 1.66
<b>4 - Corridor</b>	5.05 x 1.10
<b>5 - kitchen</b>	3.10 x 3.03
<b>6 - Bathroom</b>	3.10 x 1.82
<b>7 - Bedroom 1</b>	3.90x 3.60
<b>8 - Bedroom 2</b>	3.90x 3.60
<b>9 - Terrace</b>	4.23 x 1.30
<b>10 - M.Bedroom</b>	3.74 x 3.60
<b>11 - Dressing</b>	1.90 x 1.47
<b>12 - Bathroom</b>	1.90 x 1.82
<b>13 - Terrace</b>	1.60 x 1.35

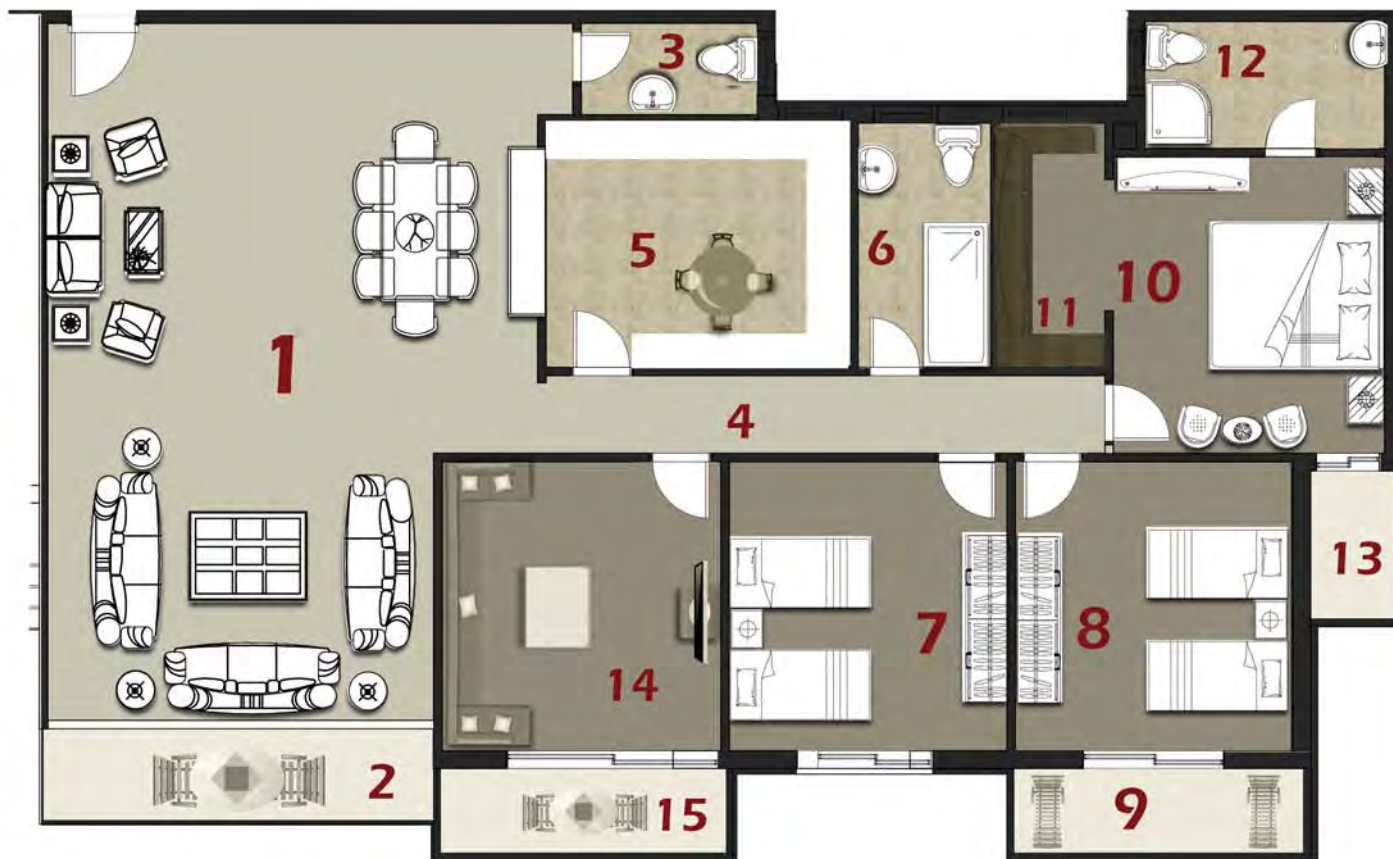




**TOTAL AREA 163 m2**

<b>1 - Reception</b>	7.69x 4.1
<b>2 - Terrace</b>	4.13x 1.30
<b>3 - Guest Toilet</b>	1.97 x 1.66
<b>4 - Corridor</b>	5.05 x 1.10
<b>5- kitchen</b>	3.10 x 3.03
<b>6- Bathroom</b>	3.10 x 1.82
<b>7- Bedroom 1</b>	3.90x 3.60
<b>8- Bedroom 2</b>	3.90x 3.60
<b>9- Terrace</b>	4.13 x 1.30
<b>10- M.Bedroom</b>	3.74 x 3.60
<b>11- Dressing</b>	1.90 x 1.47
<b>12- Bathroom</b>	1.90 x 1.82
<b>13- Terrace</b>	1.60 x 1.35

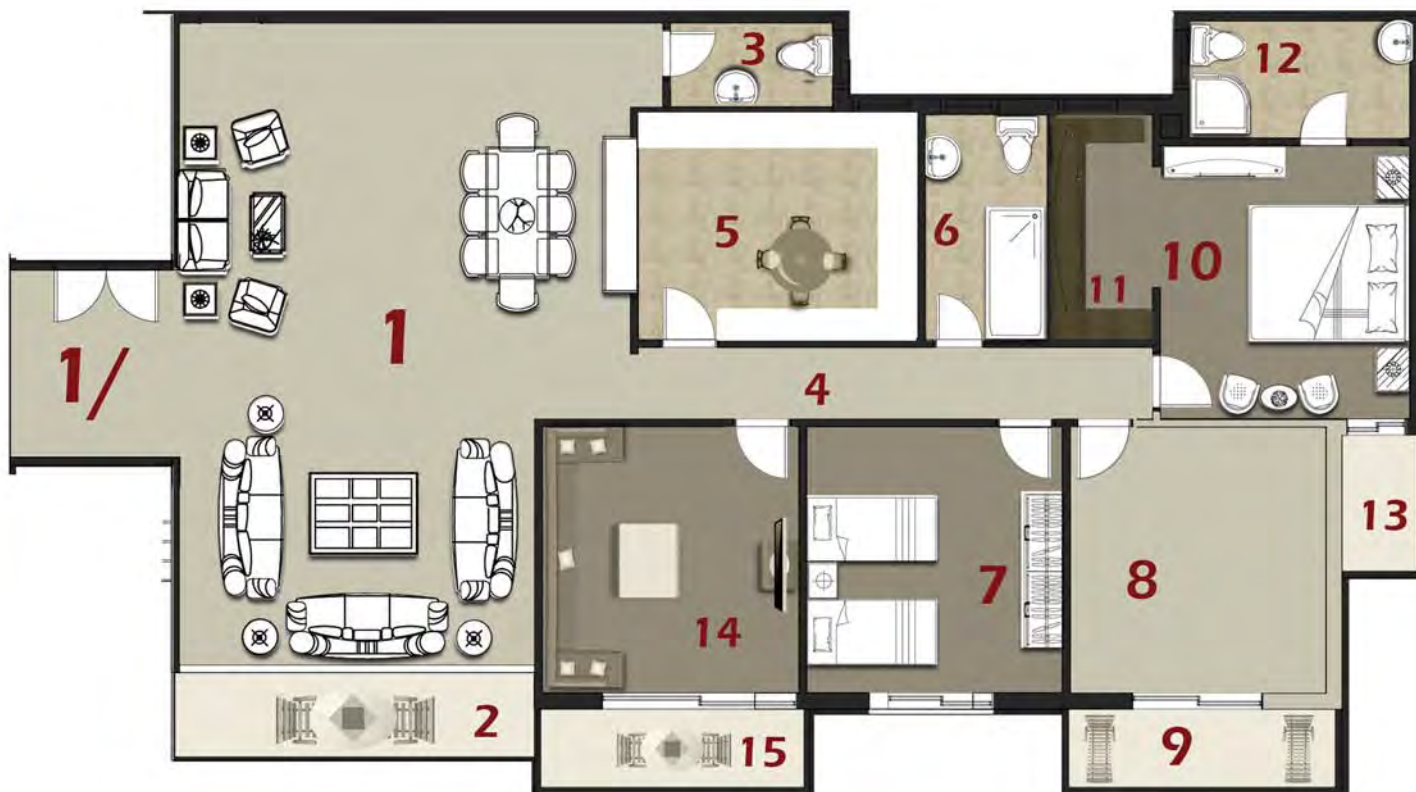




**TOTAL AREA 266 m<sup>2</sup>**

<b>1 - Reception</b>	9.89x 6.95
<b>2 - Terrace</b>	5.59 x 1.35
<b>3 - Guest Toilet</b>	2.5x 1.30
<b>4 - Corridor</b>	7.93 x 1.10
<b>5- kitchen</b>	3.46 x 4.41
<b>6- Bathroom</b>	3.46 x 1.88
<b>7- Bedroom 1</b>	4.10x 3.94
<b>8- Bedroom 2</b>	4.10x 3.94
<b>9- Terrace</b>	4.11 x 1.30
<b>10- M. Bedroom</b>	3.85 x 4.20
<b>11- Dressing</b>	1.62x 3.46
<b>12- Bathroom</b>	3.40 x 1.80
<b>13- Terrace</b>	1.30 x 2.10
<b>14- living room</b>	4.10x 3.95
<b>15- Terrace</b>	4.06 x 1.30





**TOTAL AREA 272 m<sup>2</sup>**

<b>1 - Reception</b>	9.89x 6.95
<b>1/- lobby</b>	2.62x 2.89
<b>2 - Terrace</b>	5.59 x 1.35
<b>3 - Guest Toilet</b>	2.5x 1.30
<b>4 - Corridor</b>	7.93 x 1.10
<b>5 - kitchen</b>	3.46 x 4.41
<b>6 - Bathroom</b>	3.46 x 1.88
<b>7 - Bedroom 1</b>	4.10x 3.94
<b>8 - Bedroom 2</b>	4.10x 3.94
<b>9 - Terrace</b>	4.11 x 1.30
<b>10 - M. Bedroom</b>	3.85 x 4.20
<b>11 - Dressing</b>	1.62x 3.46
<b>12 - Bathroom</b>	3.40 x 1.80
<b>13 - Terrace</b>	1.30 x 2.10
<b>14 - living room</b>	4.10x 3.95
<b>15 - Terrace</b>	4.06 x 1.30